

The trail of destruction Typhoon Tino left in Dinagat Island on Tuesday, November 4.

Typhoon Tino (Kalmaegi)

SITUATIONAL REPORT #2

DATE: NOVEMBER 5, 2025

ISSUED BY: ECOSYSTEMS WORK FOR ESSENTIAL BENEFITS,
INC. (ECOWEB)

IN COORDINATION WITH: COMMUNITY-LED EMPOWERING
ACTION FOR RESILIENCE NETWORK (CLEARNET) AND NAPC-
VDC MEMBERS

ECOWEB





Days after Typhoon Tino (Kalmaegi) passed, floodwaters slowly recede in Cebu City, revealing the depth of the devastation.

Situational Overview

Typhoon TINO (international name: Kalmaegi), the **20th tropical cyclone** to enter the Philippine Area of Responsibility (PAR) this year, continues to affect parts of **Visayas, MIMAROPA, and Northern Mindanao**, leaving widespread damage to homes, livelihoods, and infrastructure.

Tino entered the PAR as a Tropical Storm at 5:30 AM on **November 2, 2025**, and rapidly intensified into a Typhoon by the morning of November 3. It brought life-threatening winds and rains over **Eastern Visayas, Northern Cebu, Negros Island, Panay, and Palawan** before exiting the PAR on November 6 as it moved toward Vietnam.

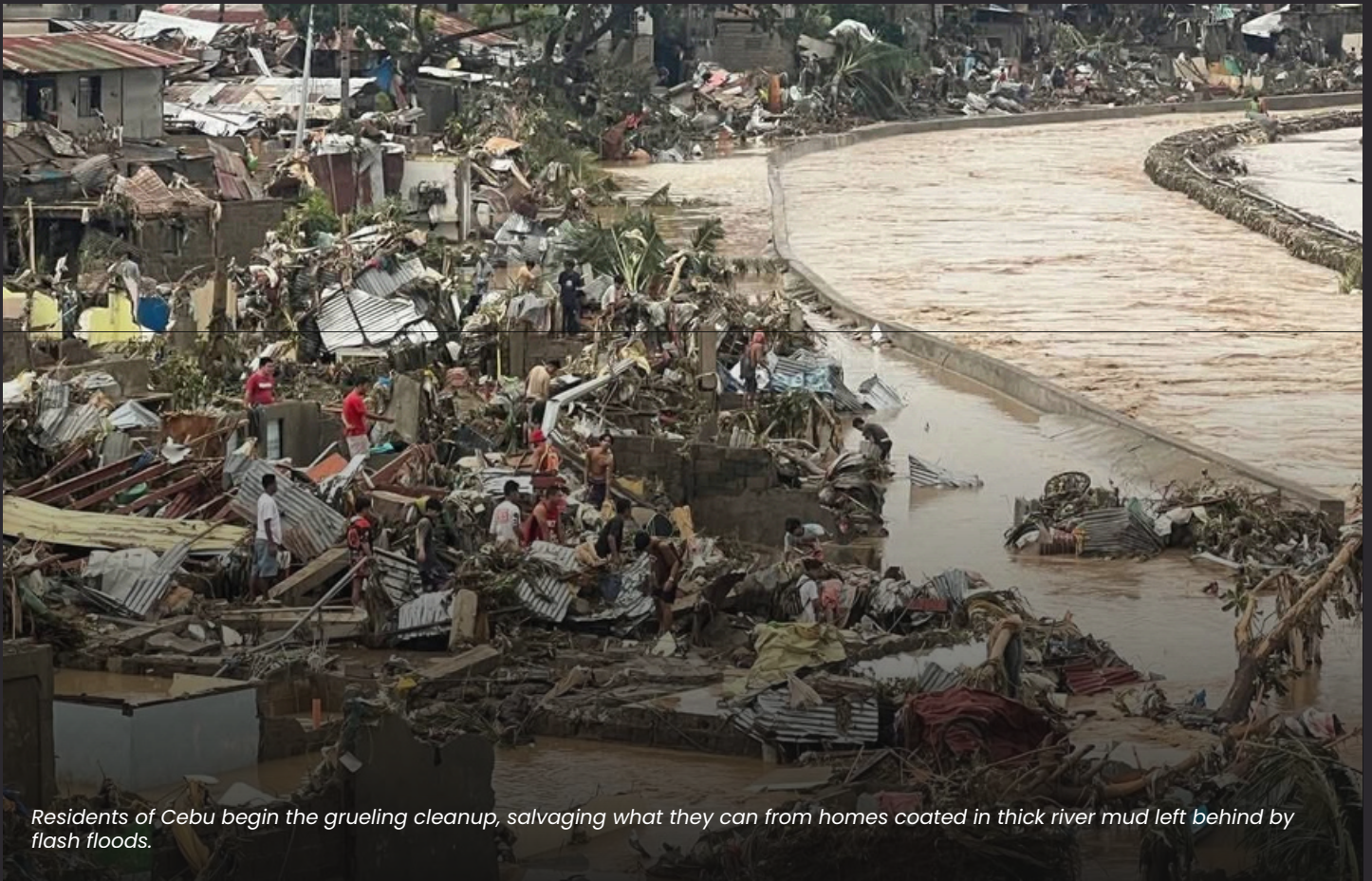
Landfall history:

- Nov 4, 12:00 AM: Silago, Southern Leyte
- Nov 4, 5:10 AM: Borbon, Cebu
- Nov 4, 6:40 AM: Sagay City, Negros Occidental
- Nov 4, 11:10 AM: San Lorenzo, Guimaras
- Nov 4, 1:20 PM: Iloilo City
- Nov 4, 7:10 PM: Magsaysay, Cuyo Island
- Nov 5, 4:10 AM: Batas Island, Palawan
- Nov 5, 4:40 AM: El Nido, Palawan

As of 11:00 AM, **November 6**, Tino was last observed moving past the Kalayaan Islands, now outside PAR but still enhancing the **Northeast Monsoon (Amihan)** and **Shear Line**, bringing rains to the **western sections of Luzon and Visayas**.

Tropical Cyclone Wind Signal (TCWS)

- Signal No. 1: Kalayaan Islands



Residents of Cebu begin the grueling cleanup, salvaging what they can from homes coated in thick river mud left behind by flash floods.

Impact

A. Affected Population



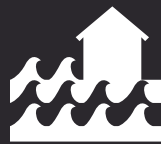
Families affected: 688,287
Individuals affected: 2,463,335
Displaced individuals: 1,238,983

Thousands of families remain displaced after Typhoon Tino (Kalmaegi) intensified across the Visayas and parts of Mindanao. Cebu and Bohol recorded the worst damage and the highest number of casualties.

In CARAGA, flooding and strong winds displaced families in Agusan del Norte, Surigao del Norte, and Dinagat Islands, while Bicol experienced scattered flooding in coastal and low-lying areas. Continuous rains in Camiguin, Lanao del Norte, and Misamis Oriental caused flashfloods and minor landslides, prompting pre-emptive evacuations. The typhoon also disrupted sea travel, stranding passengers at North Port Terminal in Manila.

Families already displaced by the recent Northern Cebu earthquake remain among the most vulnerable, now facing double displacement due to the typhoon.

B. Casualties (Data for validation as of November 6, 2025)



Dead: 82
Injured: 81
Missing: 73

C. Infrastructure

- Typhoon Tino caused extensive damage to public infrastructure and essential lifelines across the Visayas and parts of Northern Mindanao.
- A total of **81 infrastructure facilities** were damaged, with an estimated cost of **₱6.33 million**.
- **9,585 houses** were reported damaged — **611 totally destroyed** and **8,974 partially damaged**.
- Roads and bridges: 74 road sections and 10 bridge sections remain affected, hampering access and slowing down relief operations, particularly in Northern Cebu, Negros Occidental, and Antique.
- Power supply: 162 cities and municipalities experienced outages; 36% (58 areas) have since been restored.
- Water supply: 11 cities and municipalities remain affected, with no restoration reported yet.

Preparedness and Response Actions

National Government

- NDRRMC continues to monitor and coordinate nationwide disaster response through its regional DRRMCs.
- PAGASA maintains continuous weather bulletins and hazard advisories.
- MGB identified 9,113 barangays as susceptible to landslides and flooding.
- DSWD has pre-positioned family food packs (FFPs) and non-food items in regional hubs for augmentation.

Local Governments

- Cebu Province activated its special disaster preparedness plan for earthquake-affected northern areas, prioritizing relocation of families in tents.
- Pre-emptive evacuations and search-and-rescue operations ongoing in coastal and flood-prone barangays.
- Class and work suspensions implemented across affected areas.

Humanitarian Coordination

- ECOWEB and OCD Regional Offices continue to monitor and coordinate international and inter-agency support.
- Humanitarian agencies and CSOs like CARE, and World Vision Philippines are mobilizing relief across affected areas, including Northern Cebu, Negros, and Eastern Samar.
- CARE has activated its emergency teams and prepositioned supplies under the EU-funded ACCESS Project, prioritizing shelter, food, and clean water for displaced families.
- World Vision is assisting thousands of evacuees and conducting rapid assessments through its local Area Programs, appealing for USD 500,000 to support relief efforts.



Flooding in the aftermath of Tino (Kalmaegi) turned this residential area in Cebu into a damaging pool, resulting in a total loss for vehicle owners.

Community Updates: Community-led Initiatives

In ECOWEB-supported areas, community organizations using the **Survivor and Community-Led Response (sclr) approach** took proactive measures before, during, and after Typhoon Tino, showcasing how local preparedness can reduce disaster impacts.

In **San Francisco, Surigao del Norte**, the MACARBECO Cooperative worked with the Barangay LGU and BDRRM Committee to clear roads quickly after the typhoon, using DRR kits to restore mobility and safety. The Senior Citizens of Oslao Association secured rice supplies ahead of time, ensuring food availability for members and families.

In **Socorro**, the BUGAPCO group opened its treasurer's house as a temporary evacuation site and provided free meals, while SECOFICO Mini Hardware helped reinforce homes. Their community-run sea ambulance was on standby for emergencies. The Sta. Cruz Fishermen's and Farmers' Association secured boats and assisted with evacuations, demonstrating effective teamwork.

In Sitio Atoyay, the AFCOWA group distributed ready-to-eat food, extended rice on credit, and reinforced homes before landfall, which minimized damage and made emergency fund use unnecessary. SAPORLA in Barangay Salog protected poultry facilities and prepared mutual aid plans for recovery, while PBMA Inc. in **Libjo, Dinagat Islands**, used their unfinished building to safely store tools and harvests before taking shelter in the local school.

These efforts show how empowered communities with local resources and the SCLR approach can lead their own preparedness and recovery, proving resilience starts at the grassroots.



A massive tree lies across the road in Brgy. Magsaysay, Loreto, Dinagat Island, symbolizing the force of the typhoon's winds and cutting off essential access for relief teams.



This vehicle, completely submerged by the flood surge in, represents the significant and often uninsured financial losses suffered by local families and commuters.

Priority Needs

1. Emergency Shelter Support

- Relocation and reinforcement of temporary shelters, especially for earthquake-displaced families.
- Provision of tarpaulins, ropes, and construction materials for house repair.

2. Food and Non-Food Assistance

- Augmentation of family food packs, potable water, hygiene kits, and blankets.

3. Health and Sanitation

- Deployment of medical and WASH teams to evacuation centers to prevent outbreaks.

4. Power and Communication Restoration

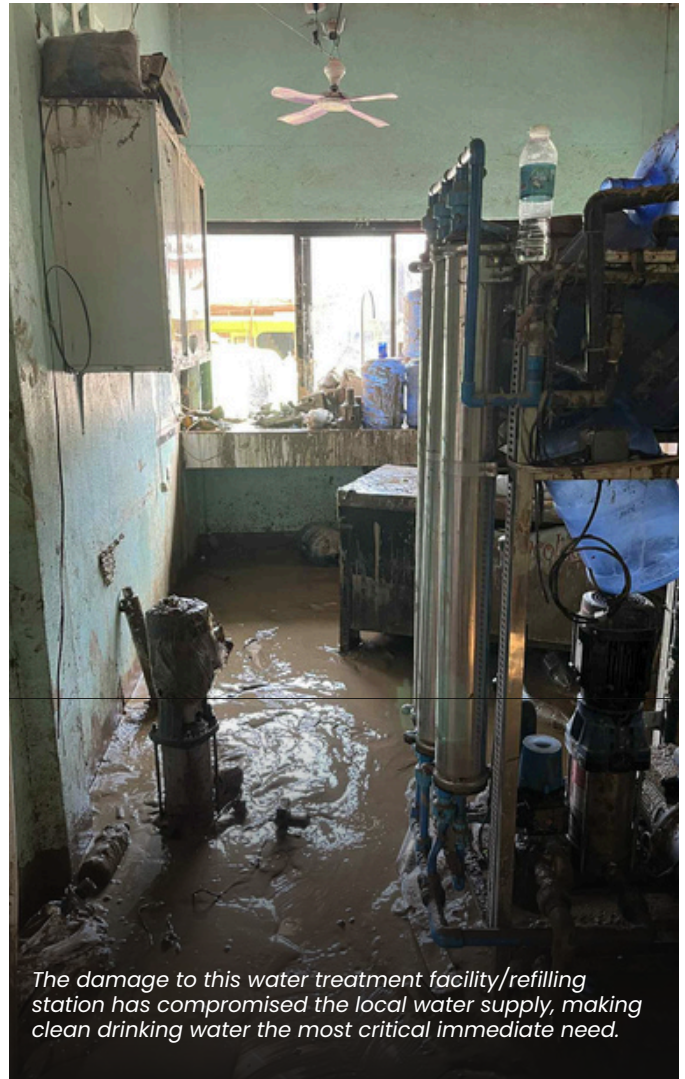
- Immediate repair of transmission lines and communication networks.

5. Livelihood Support

- Assessment and recovery assistance for damaged agricultural assets.



The number of flooded and disabled vehicles adds a severe layer of complexity to the recovery, blocking roads and impeding relief vehicle access throughout Visayas and Mindanao



The damage to this water treatment facility/refilling station has compromised the local water supply, making clean drinking water the most critical immediate need.

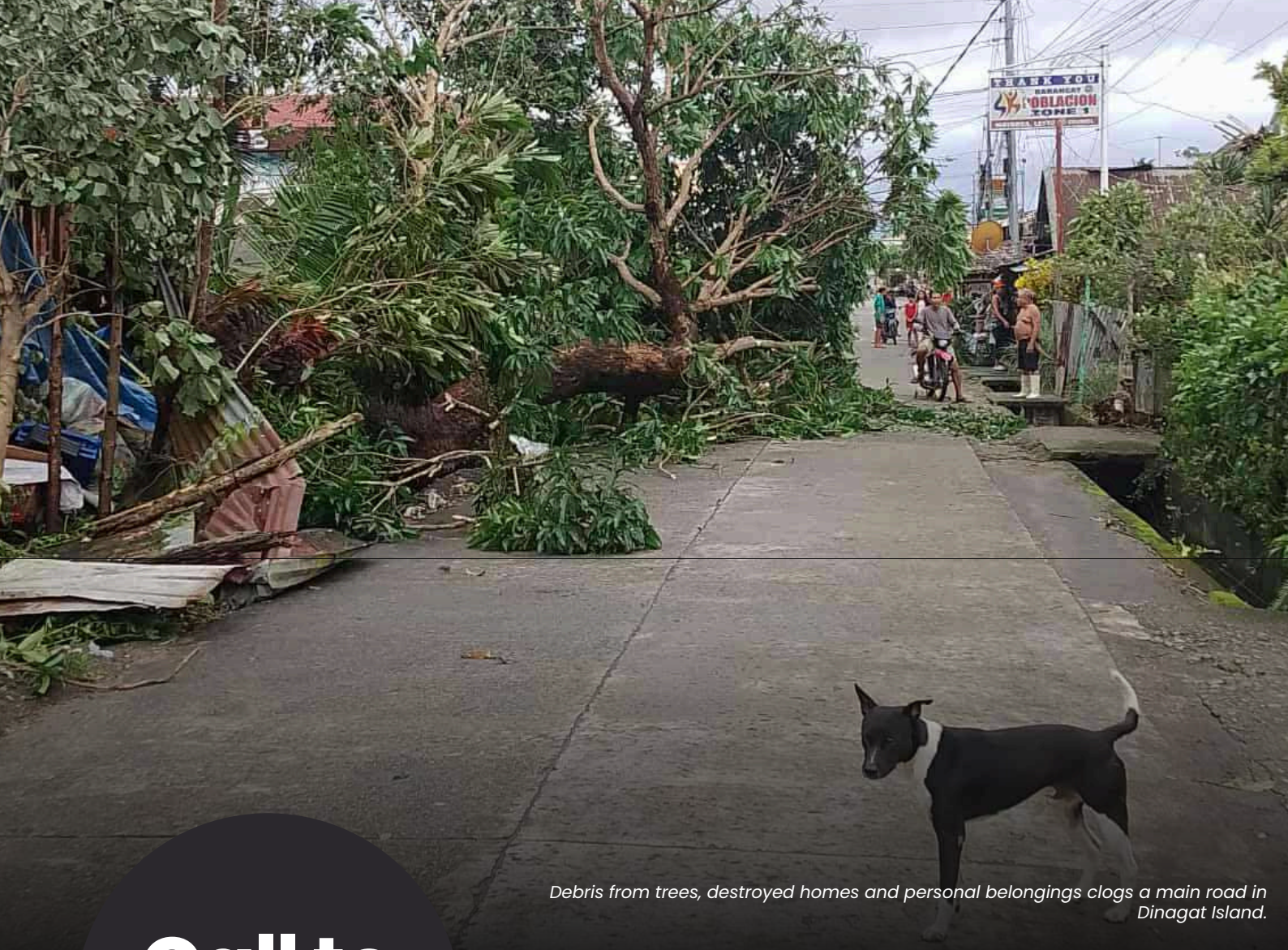
Declaration of State of Calamity

A total of 62 cities and municipalities have been declared under a State of Calamity due to the impacts of Typhoon Tino. These include 53 in Region VII (Central Visayas), 2 in Region VIII (Eastern Visayas), and 7 in CARAGA Region.

- Guimaras, Iloilo, and Negros Occidental LGUs are conducting rapid damage assessments and may issue declarations upon validation.

References:

- [PAGASA Severe Weather Bulletins](#)
- [ReliefWeb Flash Update No. 1](#)
- [NDRRMC and OCD Advisories/Situation Reports](#)
- [DSWD DROMIC Report](#)



Debris from trees, destroyed homes and personal belongings clogs a main road in Dinagat Island.

Call to Action

Empower People. Build Resilience. Leave No One Behind.

We invite our donor partners, humanitarian actors, and allies to join us in **putting communities at the center** of response and recovery. Let us **fund their leadership, trust their capacity, and amplify their solutions.**








“Recovery must not only rebuild—but do so in a way that is fairer, safer, and anchored in the power of people.”

[Donate to our Community-Led Typhoon Tino Appeal — empower affected families to rebuild their homes and livelihoods with dignity and hope.](#)

The **Ecosystems Work for Essential Benefits (ECOWEB), Inc.** has been applying the survivor and community led crisis response (sclr) approach since 2017 and has worked with around a thousand community self-help groups over the 7-year period.



Contact Us

 (+63) (0917) 175-6459 | (+63) (063) 228-9617
 ecoweb@ecowebph.org | ecoweb2006@gmail.com
 www.ecowebph.org     @ecowebph