

ILIGAN CITY UNDER WATER

A COMMUNITY-LED SITUATIONER ON TROPICAL STORM PENHA (Basyang)

Prepared by Ecosystems Work for Essential Benefits (EcoWEB), Inc.

As of 11 February 2026

Basic Information:

- Second tropical cyclone to enter Philippine Area of Responsibility this 2026
- 24-hour rainfall intensity was measured at 383mm – twice the rainfall poured by Super Typhoon Washi (Sendong) in 2011 which also hit the same path in parts of the major islands of Mindanao and Visayas

I. Executive Summary

On 05 February 2026, Tropical Storm Basyang (international name: Penha) brought very intense rainfall in Iligan City, triggering river overflow, flash floods, and landslides across large portions of the city.

Nearly one week after impact, humanitarian needs remain overwhelming.

Flood waters submerged homes, clogged roads and canals with thick mud, damaged schools and health facilities, and paralyzed the city center's commercial activity. Initial report of the local Emergency Operations Center (EOC) led by the Iligan City Disaster Risk Reduction and Management Office (CDRRMO) indicated more than 100,000 individuals being affected in the city alone, far exceeding the figures presented during the inter-agency Rapid Damage Assessment and Needs Analysis (RDANA), which reported the following information on 09 February 2026:

- 1,818 houses damaged (427 totally, 1,391 partially damaged)
- 5 reported casualties and 157 individuals injured
- PhP 94.56 million infrastructure damages
- PhP 22.28 million agricultural losses
- PhP 47.29 million in MSME losses affecting 371 enterprises
- At least 6 schools flooded

Government agencies, private foundations, police, volunteers, and civil society organizations have mobilized. Food packs, hygiene kits, and emergency relief have been distributed. Cleanup operations are underway.

But these efforts are not enough.

Nearly one week after the disaster:

- Thousands of families remain in evacuation centers
- The majority of affected households are now home-based, but received little or no assistance
- Roads, canals and homes remain buried in mud
- Shelter repair has barely begun
- Livelihoods remain paralyzed, especially among micro- and informal workers

Community-led groups, particularly women’s associations, survivor groups, and barangay volunteers, have immediately mobilized, working together to clear debris, verify damage lists, manage food distribution, and prioritize assistance for elderly persons, solo parents, children, and persons with disabilities.

What they urgently need is flexible funding support to scale the **community-managed relief and early recovery measures**.



II. National Context and Overview

Cyclone Penha entered the Philippine Area of Responsibility on 03 February 2026 under the category of Tropical Depression. It was locally named “Basyang.” Two days later, on 05 February 2026, its category was raised to Tropical Storm and brought very intense rainfall in Iligan City, causing major river overflow, flash floods, landslide and massive infrastructure damage.



National monitoring by the Department of Social Welfare and Development (DSWD) through its Disaster Response Operations Monitoring and Information Center (DROMIC) confirms that Basyang and its associated shear line affected multiple regions, prompting large-scale displacement and damage to homes, infrastructure, agriculture, and livelihoods across the country.

The DSWD activated response mechanisms ahead of landfall, including pre-positioning family food packs, deploying Quick Response Teams, and coordinating with local government units nationwide.

Despite these efforts, rain-induced flooding overwhelmed many riverine, coastal, and urban floodplain communities.

Within this broader national emergency, **Iligan City experienced concentrated and severe impacts**, with floodwaters overtopping riverbanks, inundating the commercial core, displacing thousands of families, and generating extensive community-level destruction that remains insufficiently addressed

III. Situationer: Human Impact

Prolonged heavy rainfall triggering overflow of the Iligan and Puga-an Rivers and landslides in upland barangays causing the following impact:

- 25,000-30,000 families (112,500 individuals) affected
- Rising numbers of damaged houses, which currently recorded at 4,663 houses:
 - 833 houses totally destroyed (wash-out)
 - 3,830 houses partially damaged
- 6 school facilities submerged in flood water and mud
- 7 barangays reported having water supply disruption
- 7 barangays reported having power interruption
- 80% of all affected barangays reported having intermittent connectivity
- 3 major road corridors were impassable at peak



Upland barangays such as Puga-an experienced both flooding and landslides, with puroks temporarily cut off from assistance.

Floodwaters reached up to two meters in barangays including Pugaan, Mandulog, Tambacan, Tubod, Mahayahay, and Abuno. Thick mud now covers homes, streets, and drainage systems.

Classes were suspended citywide, with several schools reporting flood damage and requiring extensive clean-up before resumption. The City is also now placed under the State of Calamity.

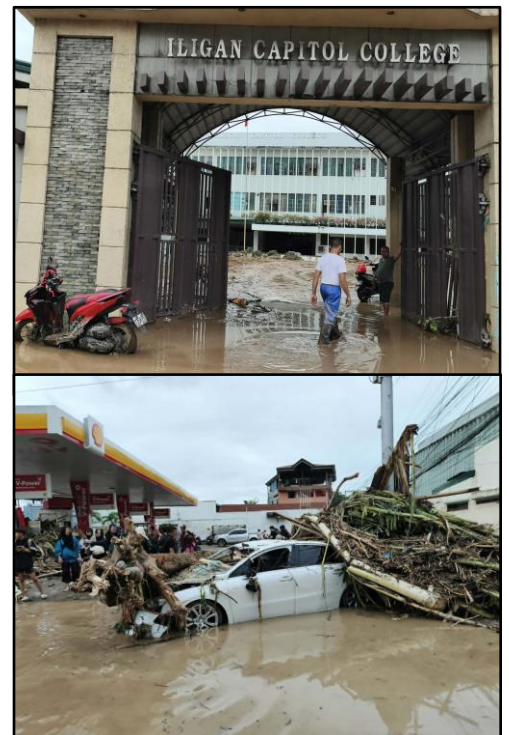
IV. City Center Damage and MSME Paralysis

Flooding heavily affected Iligan City's central commercial districts, inundating major roads, public markets, transport corridors, and business areas.

RDANA confirmed ₱47.29 million in losses affecting at least 371 MSMEs.

Small retail shops, market vendors, food stalls, tricycle drivers, fishers, and home-based enterprises lost inventories, equipment, and operating capital.

The flooding of the city center effectively paralyzed commercial activity, compounding



household vulnerability as thousands of families simultaneously lost shelter security and sources of income.

Many informal workers and micro-entrepreneurs report zero income since the flooding, unable to resume operations due to mud-filled premises, damaged tools and stocks, blocked access roads, and lack of restart capital.

Without livelihood support, families face prolonged displacement and deepening poverty

V. Community-level Impact

Rapid assessments and humanitarian cluster consolidation confirmed that 34 out of 44 barangays in Iligan City were affected – spanning upland, riverside, coastal and urban core communities.

This is a citywide emergency, not an isolated flooding. Here is a snapshot of barangay assessment:

A. Barangay Puga-an

- 426 households affected, with 120 totally destroyed houses and 136 partially damaged
- Juana Tabla Elementary School was heavily flooded with furniture damages
- Roads to several puroks particularly Dalamas, Kalawag and Durwanga remain partially impassable
- Residents reported thick mud inside their homes and delayed relief reaching interior sitios
- 200 individuals temporarily sheltering in school grounds
- Majority of the affected families are now home-based, but without shelter repair or cleaning materials

The priority needs identified by residents include:

- Shelter repair kits (plywood, lumber and nails)
- Sleeping mats and blankets
- Kitchen accessories and utensils
- Food packs for isolated upland areas

For the school recover support, the following needs were cited:

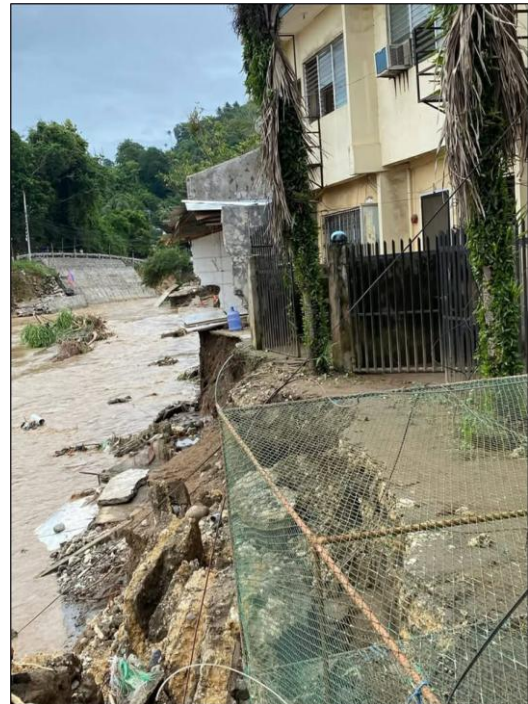
- Classroom clean-up kits
- Replacement of school furnitures
- Basic learning materials

B. Barangay Mandulog

- 508 households affected, with 150 partially damaged and 350 houses submerged in flood
- Hundreds of individuals displaced during the peak of flooding
- Families have largely returned home but face mud-filled dwellings with no materials to restore basic living conditions

C. Barangay Pala-o

- 429 households affected, with 36 families still staying in the evacuation center
- 52 houses were totally damaged, while 377 homes were either partially damaged or flooded
- 20 families have no more homes to return to because their homes were washed away by the river
- Purok 10 is now inaccessible since their local road were damaged by the flashflood
- Due to damaged source of potable and utility water, residents had to pay a higher amount now to get water.



D. Barangay Ubaldo Laya (Riverside)

- Up to 1,430 total affected households, with almost 200 families still in the evacuation centers.
- 43 houses were reported to be totally damaged while the rest were partially damaged or flooded
- Small businesses in low-lying areas remain partially inaccessible
- Significant flooding in riverside zones
- Flood waters and mud reached to the roofs or ground floors of houses
- Farming communities were heavily damaged and daily living income of farmers was disrupted

The priority needs identified by residents include:

- Debris and mud clean-up materials
- Shelter repair kits
- Sleeping mats and blankets

- Kitchen accessories and utensils
- Food packs for isolated upland areas
- Hygiene Kits

Common patterns across affected barangays are:

- Evacuation centers account for only a fraction of affected households; most families are now home-based and largely unreachable.
- Thick mud and debris clog homes, roads, and canals — consistently identified as the first barrier to recovery and even to relief assistance including barangays near the city center.
- Livelihood disruption is citywide, affecting vendors, drivers, fishers, market sellers, and home-based entrepreneurs.
- Pre-existing women's associations are functioning as frontline responders

VI. Community Response

Despite the limited external reach during the initial days, communities already initiated locally-led solutions, including:

- Women's associations organized communal kitchens
- Youth volunteers cleared debris manually
- Purok leaders consolidated household damage lists
- Survivor groups prioritized elderly persons, solo parents, PWDs, and families with totally damaged homes

Facilitating appreciative inquiry in the affected communities, EcoWEB, Inc. confirms the following:

- Evacuation centers at first faced challenges in camp management but currently they are more organized but remained undersupplied
- Severe WASH concerns due to mud-filled homes and clogged drainage
- Immediate priorities are debris clearing, shelter repair, cleaning tools, hygiene kits, and food support



VII. Community Proposals

Nearly a week after the impact of the Tropical Storm, women's and survivor groups are now able to generate project proposals ensuring their initiative to scale response.



These proposals include the following:

- Canal clearing materials proposed by the Bagong Lipunan Canal Warriors in Barangay Mahayahay, directly benefitting 519 families
 - Amount: PhP 89,498
 - Assistance needed: gloves, shovels, boots, wheelbarrows, rakes, etc.
- Emergency relief and community recovery proposed by the Mangga Uno Women's Association in Barangay Tubod, to directly benefit 292 families
 - Amount: PhP 600,000
 - Assistance needed: food packs and cleaning materials
- *Komunidad Ko, Concern Ko, Limpyuhan Ko* – a community clean-up operation proposed by the Sto. Niño Women's Association in Barangay Tambacan, to directly benefit more than 50 households
 - Amount: PhP 62,500
 - Assistance needed: shovel, mops, boots, rakes, garbage bags

These proposals are community-designed, immediately implementable, and focused on:

- ★ household-level intervention on clean-up
- ★ drainage restoration
- ★ food support
- ★ dignity kits
- ★ early recovery

The groups are pre-existing associations with trusted leadership, barangay recognition, beneficiary listing and ready recovery proposals. These proposals were immediately facilitated by EcoWEB, Inc. to be supported by the Department of Labor and Employment (DoLE) cash-for-work program. Other proposals are still being finalized by the community groups.

The implementation is immediate, but the bottleneck is on funding.

VIII. First Barrier to Recovery: Debris and Mud Clearing

Across Iligan, homes remain filled with thick mud, roads and canals are clogged and interior puroks are partially inaccessible. Without clearing, aid cannot reach vulnerable areas, water stagnates and increases health risks, families cannot safely return home, and livelihood activities cannot resume.

Community proposals consistently prioritize:

- manual mud removal from houses
- canal clearing to restore drainage
- organizing of barangay clean-up brigades
- provision of basic cleaning tools (shovels, wheelbarrows, rakes, boots, gloves and pressurized washers)
- modest cash- or food-for-work assistance for volunteers

These actions are low-cost with immediate impact.

IX. City-level Response and Coordination

Upon declaration of the State of Calamity, the City Local Government Unit of Iligan activated its Emergency Operations Centers, requested for the conduct of RDANA, managed evacuation centers and distributed initial relief.

National agencies, police, private institutions and volunteers supported the relief and clean-up operations.

Tapped by the City Local Government, the Iligan City Peoples Council (ICPC) composed of locally-accredited civil society organizations led the humanitarian cluster coordinating mechanism, with EcoWEB, Inc. as ICPC Vice Chair co-leading the cluster operations in coordination with other CSOs.





EcoWEB, Inc. immediately mobilized its community networks to verify household damage, support barangay coordination, engage women and survivor groups and assist the preparation of community recovery proposals.

Assistance remains concentrated on evacuation centers, while most home-based affected households continue to receive limited or no support. Despite collective efforts, **the scale of need far exceeds current assistance.**

X. Key Humanitarian Gaps

The following inputs are highly recommended to be prioritized in humanitarian assistance:

1. Food and hygiene support for at least ten thousand families
2. Shelter recovery for hundreds of totally damaged homes
3. Repair kits for partially damaged shelters
4. Assistance to home-based families
5. Debris and mud clearing of homes, roads, and canals
6. WASH support to prevent disease outbreaks
7. Livelihood restart for MSMEs and informal workers; and
8. School recovery and classroom rehabilitation

XI. Funding and Support Ask

As prioritized by communities, EcoWEB, Inc. and other members of the Iligan City Peoples Council seeks urgent and flexible support for the following:

1. Community-Led Debris & Mud Clearing
 - Tools, protective gear, hauling support, community clean-up brigades
 - Support for declogging (particularly for mud needing siphoning)
2. Emergency Household Recovery Flexible Grants thru community-groups
 - Target recipients: 5,000 vulnerable and heavily affected families
3. Shelter Repair
 - Tarpaulins, lumber, toolkits

4. WASH Assistance
 - Water trucking, hygiene kits, jerry cans
5. Livelihood Restart
 - Micro-grants for vendors, drivers, farmers, fishers
6. School Recovery
 - Clean-up kits, replacement furniture, learning materials

XII. Call to Action

Many of Iligan's communities have organized community groups. Women's groups and survivor associations are already responding.

While the government and private sector assistance is ongoing, **it is not enough to meet the scale of need.**

Without immediate investment in community-led clean-up, shelter repair, and livelihood recovery, thousands of families risk prolonged displacement and deeper poverty.

**The window for rapid recovery is closing.
Now is the moment to act!**

References:

1. **Iligan City Disaster Risk Reduction and Management Office (ICDRMO)**
Rapid Disaster Assessment and Needs Analysis (RDANA) presented at the Iligan City Emergency Coordination Meeting, February 2026.
2. **Department of Social Welfare and Development (DSWD)** – Disaster Response Operations Monitoring and Information Center (DROMIC).
Effects of Tropical Storm Basyang (Penha) – National situation reports, February 2026.
3. **Iligan City People's Council (ICPC)**
Humanitarian Cluster consolidation and presentation to the Iligan City Emergency Coordination Meeting (Humanitarian Response Sub-Cluster) covering barangay-level impacts in 33 of 44 barangays, February 2026.
4. **Ecosystems Work for Essential Benefits (EcoWEB), Inc.**
Community tracking tools, self-help group (SHG) beneficiary lists, barangay validation reports, and Appreciative Inquiry results, February 2026.