

A local fast food restaurant completely collapsed in the wake of today's earthquake. | Photo courtesy of ECOWEB community partners



Mindanao Earthquake

SITUATIONAL REPORT #1

DATE: AS OF JUNE 8, 2026

ISSUED BY: ECOSYSTEMS WORK FOR ESSENTIAL BENEFITS, INC. (ECOWEB); CLEARNET AND COMMUNITY PARTNERS





Widespread structural damage has been reported across General Santos City after a major magnitude 7.8 earthquake, including visible cracks and debris at this local church. | Photo courtesy of ECOWEB community partners

Situational Overview

A powerful magnitude 7.8 earthquake struck southern Mindanao at approximately 7:37 AM on June 8, 2026, causing widespread panic, structural damage, power outages, and tsunami evacuations across several provinces in Mindanao. According to the United States Geological Survey (USGS) and the Philippine Institute of Volcanology and Seismology (PHIVOLCS), the earthquake originated offshore near Maasim, Sarangani Province, along the Cotabato Trench. The earthquake was shallow, resulting in severe ground shaking felt across SOCCSKSARGEN, Davao Region, BARMM, Northern Mindanao, and neighboring areas.

PHIVOLCS issued an immediate tsunami warning for coastal communities in southern Mindanao, prompting large-scale evacuations in coastal municipalities and cities. Tsunami waves ranging from minor sea-level changes to approximately 1.5 meters were recorded in several coastal areas.

The earthquake occurred on the opening day of School Year 2026–2027, affecting millions of learners and causing damage to schools, public infrastructure, commercial establishments, and residential structures. Strong aftershocks continue to be experienced across the region, with the strongest recorded aftershock reaching magnitude 6.5.

As of this reporting period, emergency responders continue search, rescue, retrieval, and rapid damage assessment operations. Casualty figures remain preliminary and are expected to increase as validation continues.



In this screen capture from a video provided by DepEd Mahayahay Elementary School, children seek safety in a field as a building crumbles in the background during a recent earthquake in Malita, Davao del Sur. | Photo courtesy of DepEd

Impact

A. Affected Population*

Preliminary estimates indicate that millions of residents across Mindanao experienced strong to severe shaking.

Areas significantly affected include:

- Sarangani Province
- General Santos City
- South Cotabato
- Sultan Kudarat
- Davao Region
- Bangsamoro Autonomous Region in Muslim Mindanao (BARMM)
- Zamboanga Peninsula



According to USGS estimates:

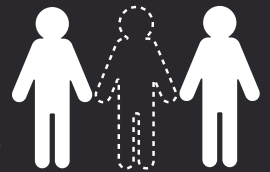
- Approximately 1.07 million people experienced Intensity VIII (Severe to Very Destructive) shaking.
- Approximately 3.93 million people experienced Intensity VII (Very Strong) shaking.
- More than 7 million people experienced Intensity VI (Strong) shaking across Mindanao.

***Population displacement figures are still being validated as tsunami evacuations and structural safety inspections continue.**

B. Casualties (Preliminary)

As of 1:00 PM, June 8, 2026:

- Dead: At least 15 persons
- Injured: At least 129 persons
- Missing: 7 persons



Most casualties were reportedly caused by collapsing structures, falling debris, and other earthquake-related incidents.

Search and rescue operations remain ongoing in General Santos City and other heavily affected areas.

C. Infrastructure and Lifelines



Initial reports indicate significant damage to public and private infrastructure across the affected regions.

Reported impacts include:

- Partial collapse of commercial buildings in General Santos City
- Structural damage to malls, schools, universities, hospitals, and government facilities
- Damage to bridges, roads, and public transport terminals
- Collapse of school buildings and old structures
- Cracked roads and damaged bridges in several municipalities
- Temporary suspension of airport operations at General Santos International Airport
- Damage to power transmission facilities
- Disruptions in electricity, internet, water, and communication services

Infrastructure damage assessments remain ongoing.

Preparedness and Response Actions

Government Response

National and local government agencies immediately activated emergency response protocols.

Key actions:

- PHIVOLCS issued tsunami warnings for vulnerable coastal communities.
- The National Disaster Risk Reduction and Management Council (NDRRMC) activated monitoring and response operations.
- The Office of Civil Defense (OCD) initiated rapid damage and needs assessments.
- The Department of Social Welfare and Development (DSWD) activated Quick Response Teams and pre-positioned relief supplies.
- The Department of Education (DepEd) deployed engineers to assess damaged school facilities.
- The Department of Health (DOH) activated emergency health response mechanisms.
- The Philippine Coast Guard suspended sea travel in affected coastal areas.
- The Philippine Army mobilized Humanitarian Assistance and Disaster Response (HADR) teams.
- The Philippine National Police deployed additional personnel to support search, rescue, retrieval, and public safety operations.

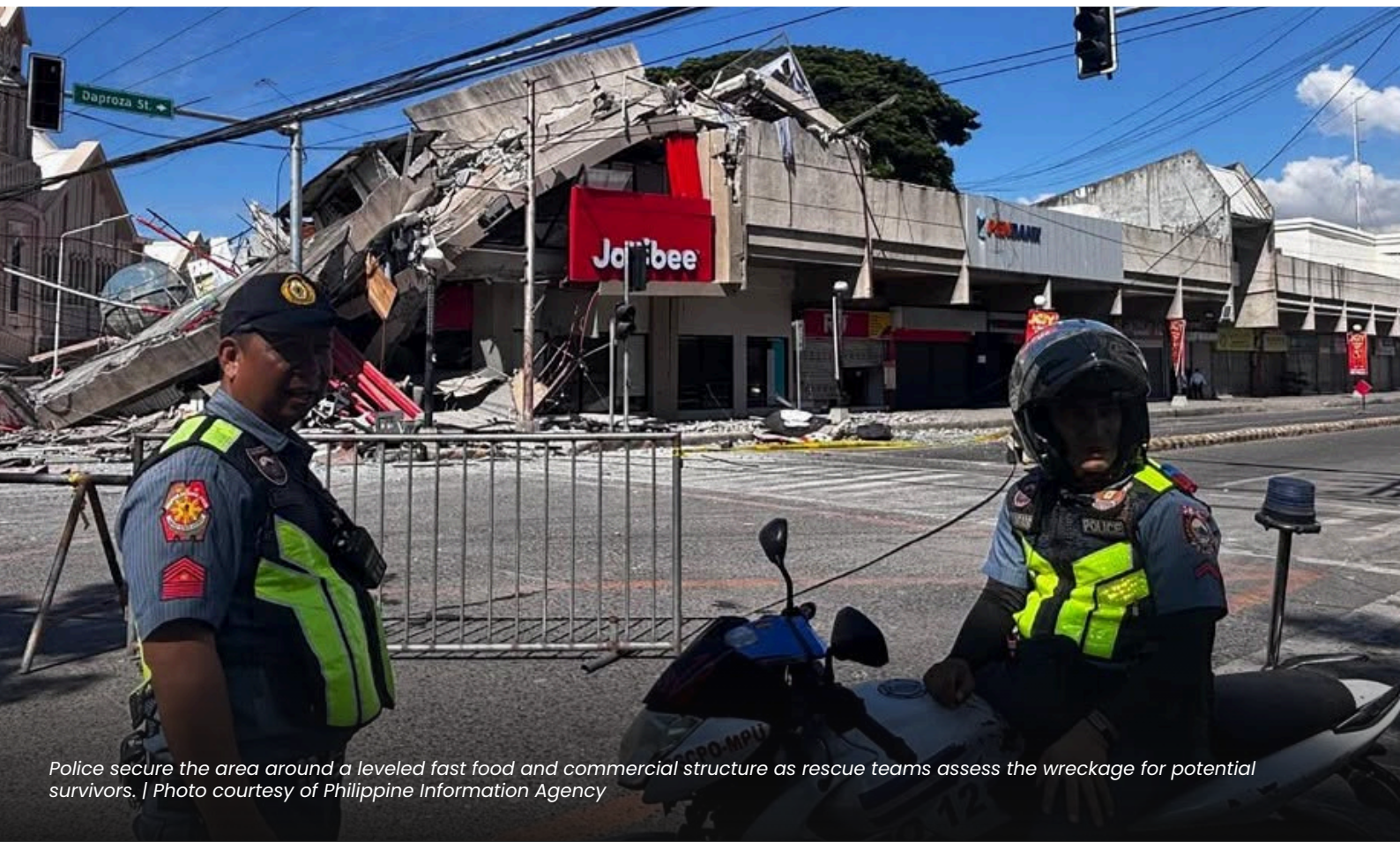
Suspensions were implemented to facilitate safety inspections and emergency response activities.

Humanitarian Coordination

Response coordination is ongoing among national agencies, local government units, humanitarian organizations, and civil society groups.

Priority response sectors include:

- Search and Rescue
- Emergency Shelter
- Food Security and Livelihoods
- Health
- WASH
- Protection
- Education in Emergencies
- Logistics and Emergency Telecommunications



Police secure the area around a leveled fast food and commercial structure as rescue teams assess the wreckage for potential survivors. | Photo courtesy of Philippine Information Agency

Priority Needs

Based on initial assessments, the following urgent needs have been identified:

Emergency Shelter

- Tarpaulins
- Shelter repair materials
- Temporary shelter support

Food and Non-Food Items

- Family food packs
- Blankets
- Sleeping mats
- Cooking utensils
- Solar lamps

Water, Sanitation, and Hygiene (WASH)

- Safe drinking water
- Water containers
- Hygiene kits
- Water purification supplies

Health and Protection

- Emergency medical assistance
- Psychosocial support services
- Protection support for children, women, older persons, and persons with disabilities

Education

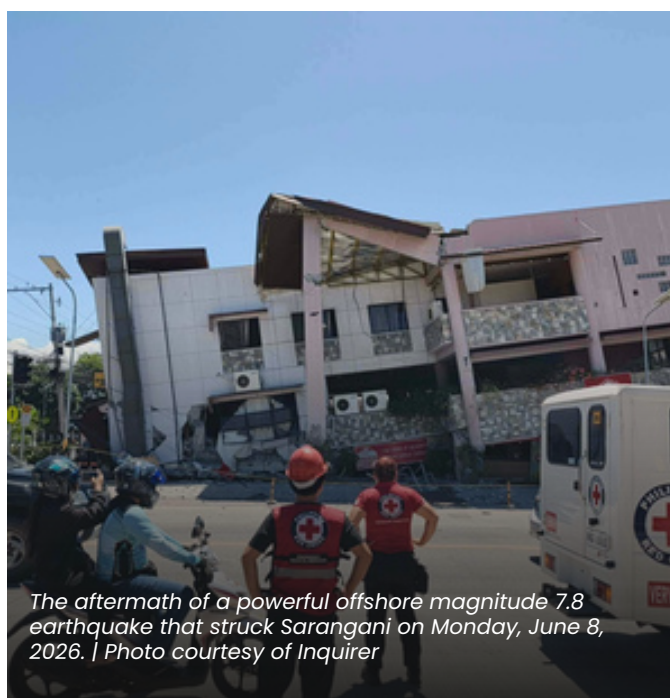
- Rapid assessment of school facilities
- Temporary learning spaces
- Learning materials for affected schools

Community-led Response and Recovery

- Flexible funding for community-led initiatives
- Support to local self-help groups
- Community-managed emergency and recovery actions through sclr approaches



Matanao National High School in Davao del Sur shows significant structural failure following the powerful earthquake that struck on June 8, 2026 | Photo courtesy of Inquirer



The aftermath of a powerful offshore magnitude 7.8 earthquake that struck Sarangani on Monday, June 8, 2026. | Photo courtesy of Inquirer



A local shopping center stands heavily compromised after the powerful earthquake violently tore away its outer walls. | Photo courtesy of ECOWEB community partners

References:

- Philippine Institute of Volcanology and Seismology (PHIVOLCS) – Earthquake and Tsunami Bulletins, 08 June 2026.
- United States Geological Survey (USGS) – Magnitude 7.8 Mindanao Earthquake Event Summary, 08 June 2026.
- National Disaster Risk Reduction and Management Council (NDRRMC) Initial Situation Monitoring Reports, 08 June 2026.
- Office of Civil Defense (OCD) Field Monitoring and Rapid Assessment Updates, 08 June 2026.
- Department of Social Welfare and Development (DSWD) Disaster Response Operations Monitoring Reports, 08 June 2026.
- Philippine News Agency (PNA) Reports, June 2026.
- ABS-CBN News Reports, June 2026.
- Population and Geographic Profile of Sarangani Province, PhilAtlas.
- Community reports and field information gathered by ECOWEB, CLEARNet partners, local self-help groups, and community volunteers, 08 June 2026.



Donation QR Code



A look at the flattened structure that housed 101.5 Love Radio General Santos, which completely collapsed during the powerful magnitude 7.8 earthquake that struck Mindanao on Monday morning, June 8, 2026 | Photo courtesy of Inquirer

Call to Action

Empower People. Build Resilience. Leave No One Behind.

We invite our donor partners, humanitarian actors, and allies to join us in **putting communities at the center** of response and recovery. Let us **fund their leadership, trust their capacity, and amplify their solutions.**

Donate to our Community-Led Mindanao Earthquake Appeal – empower affected families to rebuild their homes and livelihoods with dignity and hope.

DONATE NOW

The **Ecosystems Work for Essential Benefits (ECOWEB), Inc.** has been applying the survivor and community led crisis response (sclr) approach since 2017 and has worked with around a thousand community self-help groups over the 7-year period.



Contact Us

- +63 (0917) 175-6459 | +63 (063) 228-9617
- ecoweb@ecowebph.org | ecoweb2006@gmail.com
- www.ecowebph.org @ecowebph